

Marine Carrier Best Practices



Marine Carrier Best Practices

Marine Carrier Best Practices is a safety program created by the Marine Forest Safety Advisory Group, with support from the British Columbia Forest Safety Council (BCFSC).

Given some of the challenges associated with marine passenger vessel travel in the forest industry, it was felt that a set of defined operational practices were needed to achieve the greatest level of safety for crew and passengers. There is after all, no more important a goal, than getting all our people home safely.

The MCBP is a set of operating practices and procedures that provides an assurance to clients, and workers, that an operator has not only met the basic Transport Canada and WorkSafeBC regulations, but strives to operate to a higher level. It also provides guidance to the clients, so that they may understand what their part is in creating a safe environment for marine passenger vessel operations.

For an operator, this program provides an opportunity to show their customers and potential customers that their operation has put safeguards in place and their service includes safe practices that assists them in making decisions that support and maintain the highest level of safety performance.

The MCBP was created to address all safety expectations being put upon an operator providing a service to their clients/passengers. By investing in safety, the operator can expect to not only improve business performance but garner favour from their clients, and peers. By fostering a culture of safety and increasing safety throughout the industry, operators can be at the forefront of creating the safest and most efficient marine carrier services in the BC Forest Industry.

Safety is good for business!

Titles, Abbreviations and Definitions

Crew boat	any vessel transporting personnel
Crew boat operator	the person in charge of a crew boat transporting personnel
Construction Standard(s)	TP1332 that applies to all vessels other than fishing and special purpose vessels, that do not exceed 15 gross tons and do not carry more than 12 passengers
Dangerous goods	dangerous goods as defined by the Transportation of Dangerous Goods Regulations
DSC	Digital Selective Calling
EPIRB	Emergency Position Indicating Radio Beacon
First Inspection	Transport Canada required inspection for new vessels
FM	a lesser radio frequency (Frequency Modulation) than VHF, typically used for internal company specific frequencies
GMDSS	Global Marine Distress Safety System
GPS	Global Positioning System
IMDG code	International Maritime Dangerous Goods Code
Initial Inspection	Transport Canada has conducted an initial inspection
License	an application for a Small Commercial Vessel license from Transport Canada through a Registrar of Ships or any Customs Office. A License number issued is a permanent license number and if ownership changes the license number remains the same
Magnetic course	a course by compass not considering deviation
Marine Transportation	any commercial marine operator, company or person who offers marine transportation either as a core business or as a supplementary service
Master Ltd. 60 Ton	Transport Canada certification for vessels carrying more than 12 passengers

MCTS	Marine Communications and Traffic Services
MED	Marine Emergency Duties
Passenger	anyone on a vessel except for the master, a member of the crew, or a person engaged in a capacity on board the vessel on the business of the vessel
Register	a vessel must be registered appropriately for commercial use with Transport Canada. The vessel will usually receive a Commercial # (such as C12345BC).
ROC-MC	Radio Operator's Certificate Marine Commercial
Self-Inspection	after Initial or First Transport Canada inspection, onus is on the operator to annually complete a self-inspection form and submit to Transport Canada for an annual decal of compliance
Small Commercial Vessel	a vessel no larger than 15 gross tons(volume) that is not a fishing vessel or a pleasure craft. If passengers are carried there are no more than 12 on board.
SVMIP	Small Vessel Monitoring and Inspection Program. Transport Canada regulated vessel inspection program
SVOP	Small Vessel Operator Proficiency Certification
True course	as laid off on a chart
Vessel Markings	a registered vessel must show its official number above the water line on each side of the boat
VHF	Very High Frequency (radio)
WSBC	WorkSafeBC
WHMIS	Workplace Hazardous Materials Information System

General Requirements

Scope

These standards apply to small commercial passenger vessels up to 12 passenger capacity. Any pleasure craft, crew boat, accommodation or fishing vessel, or even human powered vessel (e.g. row boat) that is used to transport workers is legally defined as a Commercial Passenger Vessel.

You must be trained for vessel size, passenger and crew count, and water type in BC. All the training and certificate requirements are the same except for 5 GT or less, 8 m long or less in sheltered waters where only a PCOC is needed:

Vessel size 5 gross tons* or less	Passenger and crew count	Near Coastal waters, Class 2 (< 25 nautical miles from shore)	Sheltered waters in BC (See Appendix 5)
Longer than 8 metres	7-12 passengers (anyone on the vessel who is not the operator or crew) + crew necessary for safe vessel operation (<i>does not include shore crew</i>)	<ol style="list-style-type: none"> 1. Small Vessel Operator Proficiency (SVOP) 2. Marine Emergency Duties (MED) (A1, A2, A3) 3. Marine First Aid Level 1** (MFA) 4. Marine Restricted Operator Certificate (ROC) 	<ol style="list-style-type: none"> 1. Small Vessel Operator Proficiency (SVOP) 2. Marine Emergency Duties (MED) (A1, A2, A3) 3. Marine First Aid Level 1** (MFA) 4. Marine Restricted Operator Certificate (ROC)
8 metres long or less	1-6 passengers + crew necessary for safe vessel operation	<ol style="list-style-type: none"> 1. Small Vessel Operator Proficiency (SVOP) 2. Marine Emergency Duties (MED) (A1, A2, A3) 3. Marine First Aid Level 1** (MFA) 4. Marine Restricted Operator Certificate (ROC) 	<ol style="list-style-type: none"> 1. Pleasure Craft Operator Card (PCOC)

*Notes: *Gross tonnage (GT) may be measured in three ways: assigned, simplified and by a duly appointed tonnage measurer.
**Regarding Marine FA level 1 vs OFA level 1 with transportation endorsement: WorkSafeBC First Aid requirements may be different for the 'work site', but those requirements may be acceptable to meet Transport Canada requirements.*

Operating Practices

Safety will be the prime consideration when providing marine services

The marine carrier will operate in a professional manner in full compliance with applicable local, provincial, and federal laws. Convenience or other considerations should never outweigh safety considerations in the conduct of any marine operations.

Reporting a Marine Occurrence

Marine carriers shall follow the procedures in the Marine Incident Reporting - Forestry Operations provided in Appendix 3

Insurance

Marine Carrier will maintain a minimum of \$250,000.00 multiplied by the passenger capacity of the vessel of liability insurance. The marine carrier must provide documentary evidence of

insurance and a photocopy of the certificate of insurance coverage. The marine carrier must have an account in good standing with WorkSafeBC.

Transportation of Dangerous Goods

In order to transport dangerous goods, the operator must be adequately trained as defined in the Transportation of Dangerous Goods Act, 1992.

Marine carriers must adhere to regulations as defined in the Canada shipping act, 2001 around quantities and segregation of dangerous goods.

Charts

Paper charts which are appropriate for all areas of operation are to be on board all vessels.

Procedures

Pre-Sailing Briefing

It is the responsibility of the crew boat operator to ensure that a pre-sailing briefing is provided to a passenger conducting their initial trip with the specific vessel or as a reminder to a repeat passenger who has not traveled with this vessel for a considerable time (e.g. 6 weeks or more).

This briefing should include, but not be limited to the following:

- Location of emergency equipment
- Location of life preservers
- Location of life raft, if required, and instruction on how it is to be deployed
- Emergency procedures including communication
- Fuel shut off

Emergency Response Procedures

Written emergency response procedures specific to marine operations with assigned responsibilities must be onboard.

- Documented drills must be conducted to ensure readiness of crew should emergency response be required.

Stowage of Freight

It is the responsibility of the boat operator to assess and direct the stowage of freight such that the volume, weight, position and securement ensure vessel stability.

Survival Gear

All vessels carrying passengers must carry Transport Canada approved life jackets for everyone on board.

Go – No-Go Guidelines

The carrier must follow the 'Go – No-Go' Guidelines' established by the Marine Forest Safety Advisory Group included in Appendix 4.

Right to Terminate Voyage

If at any time a passenger or worker feels their safety is being compromised they may request termination of the voyage. (Occupational Health and Safety Regulation 3:12, 3:13)

Check In

If the trip is estimated to take longer than 30 minutes a check in procedure must be in place. Each check in must be recorded with current location and time. If a vessel is more than 30 minutes overdue, the Coast Guard must be contacted.

Communications

Radio Frequencies

Each Vessel must have the following channels available:

- VHF Channel 16 (Distress, Urgency or Safety)
- VHF Channel 71 MCTS ("Traffic Channel")

Radio Equipment

Vessels must be equipped with a VHF-DSC Radio. Radio equipment must be type-approved by Industry Canada Spectrum Management (ICSM). Cell phones and satellite phones are not a substitution for a marine radio; however, it is recommended that they are available for back up communication.

Certification

Operators must hold a Radio Operator's Certificate Maritime Commercial (ROC-MC).

Maintenance

Maintenance General

Significant modifications to vessels must be engineer certified. Vessels must be part of the Small Vessel Compliance Program (Non-Pleasure Craft) (SVCP). Vessels must be inspected and supporting documentation available when requested.

Basic Requirements

Appendix 1 lists some basic requirements around maintenance, supplies and configuration.

Vessel Operating In Restricted Visibility

In areas of restricted visibility, vessel operators must have local knowledge and experience operating radar equipment as outlined below remembering that most trips could result in limited visibility situations.

Local Knowledge/Operation of Radar Equipment

If operating in the dark or in the fog the operator must have:

- At least 75 hours of operating the vessel in local waters. The operator must have also navigated the planned route previously in good visibility with radar on.
- Knowledge and a minimum of 30 hours experience demonstrating correct operation of radar equipment.

Audits

Audits and/or Spot Checks

Vessels may be subject to annual audits and/or spot checks.

Audits may be conducted on a routine basis without prior notification. Spot checks may be conducted unannounced. The vessel operator shall make available all personnel and vessel records.

Conditions for Termination

Utilization of the marine carrier may be suspended immediately for reasons including but not limited to the following:

- Failure to comply with the MFSAG Marine Carriers Best Practices
- Failure to comply with the applicable Canadian Marine Regulations
- Failure to comply with WorkSafe BC regulations
- Failure to comply with Transport Canada regulations
- Failure to report a Marine occurrence
- Failure to maintain a boat in a seaworthy condition
- Failure by the marine carrier to participate in an inspection at the request of the contract holder

Appendix 1

The following is required when assessing a vessel covered by the scope of this standard. It is not an exhaustive list, rather a list of easily checked items:

1. The vessel registration number clearly visible
2. Where passengers are on deck, 36" high railings with no more than a 9" vertical gap around deck
3. Deck areas have a non-skid surface or checker plate
4. Engine compartment hatches must be locked
5. Heat sensor alarm for the engine compartment
6. Access to a fuel shut off that is not located in the engine compartment
7. Air vents to the engine compartment must have slide-over closures
8. An approved fire extinguisher ported into the engine compartment
9. A bilge pump capable of pumping 2000 gal per hour with an anti-siphon valve
10. Manual bilge pump or bailing bucket
11. Anchor with 20 feet of chain and 120 feet of minimum 1/2" anchor rope
12. Navigation lights
13. Lights to illuminate the working and boarding areas
14. DSC capable radios
15. Emergency communication device with alternate power source
 - Personal location device, satellite phone or alternative
16. Life ring and/or heaving line (50 feet /15 meters)
17. Re-boarding device if no swim grid is attached
18. Transport Canada approved life jackets – enough for all on board
19. Transport Canada approved life jackets to be worn by all passengers when on deck
20. Transport Canada approved first aid kit
21. One dry chemical fire extinguisher in the cabin in addition to the ported one mentioned above
22. Fire extinguishers are to be inspected by a qualified inspector annually
23. If outboard engine, a second Class B fire extinguisher in case of a fire

Appendix 2

Suggested Safety Equipment (In addition to that listed in Appendix 1)

The following are suggested safety items for all marine carriers:

1. GPS navigation system
2. Backup power (Kicker) for single engine vessels
3. Vessel tracking system or equivalent
4. Man overboard device or equivalent that will disable engine in the event of an overboard occurrence

Appendix 3

Marine Incident Reporting - Forestry Operations

REPORTABLE INCIDENT/OCCURRENCE

FIRST: Notify Transportation Safety Board and Transport Canada, by contacting Marine Communications and Traffic Services (MCTS) as soon as possible after the event: phone 1-250-363-6333 or use local VHF channel. Link to reporting form that must be filed within 30 days: <http://www.bst-tsb.gc.ca/eng/incidents-occurrence/marine/1808E-20140926.pdf>

The operator of the vessel, any crew member of the vessel, owner, or the harbour master, who has direct knowledge of the following, must report when:

1. A PERSON:

- **is killed or sustains a serious injury** as a result of boarding; being on board; or falling overboard; or coming into direct contact with any part of the vessel or its contents . A serious injury is defined*as:
 - a fracture of any bone, except simple fractures of fingers, toes or the nose
 - lacerations that cause severe hemorrhage or nerve, muscle or tendon damage
 - an injury to an internal organ
 - second or third degree burns, or any burns affecting more than 5% of the body surface
 - a verified exposure to infectious substances or injurious radiation or
 - an injury that is likely to require hospitalization(*Under Canadian Transportation Accident Investigation and Safety Board Act)
- whose duties are directly related to the safe operation of the ship is **unable to perform his/her duties** as a result of a physical incapacitation which poses a threat to the safety of persons, property, or the environment.

2. THE VESSEL:

- sinks, founders, capsizes, is missing or abandoned
 - is involved in a collision or a risk of a collision
 - sustains a fire or an explosion
 - goes aground or makes unforeseen contact with the bottom without going aground
 - sustains damage that affects its seaworthiness or renders it unfit for its purpose
 - is anchored, grounded or beached to avoid an occurrence
 - fouls a utility cable or pipe, or an underwater pipeline
 - cargo shifts or is lost overboard
 - sustains a total failure of the main or auxiliary machinery
 - sustains a total failure of the navigation equipment or the propulsion, steering, or deck machinery if the failure poses a threat to the safety of any person, property or the environment
 - there is an accidental release on board or from the ship consisting of a quantity of dangerous goods or an emission of radiation that is greater than the quantity or emission levels specified in *Part 8 of the Transportation of Dangerous Goods Regulations*
 - is involved in a dangerous occurrence*.
- (*A dangerous occurrence includes the breakage or malfunction of any rigging, structure or machinery on a vessel that could have caused serious injury or loss of life, or a situation which could have resulted in a casualty or accident.)

SECOND: Notify WorkSafeBC at phone 1-888-621-7233 immediately after the incident

172(1) An employer must immediately notify the Board of the occurrence of any accident that:

- (a) resulted in serious injury to, or the death of, a worker
- (b) involved a major structural failure or collapse of a building, bridge, tower, crane, hoist, temporary construction support system or excavation
- (c) involved the major release of a hazardous substance
- (c.1) involved a fire or explosion that had a potential for causing serious injury to a worker, or
- (d) was an incident required by regulation to be reported.

Note: Submission of a Form 7 meets requirements for reporting an injury but does not meet the requirements to report the incident which must be done through the phone number indicated above.

NON REPORTABLE INCIDENT/OCCURRENCE

These may include an incident that:

- resulting in an injury that is not a reportable incident (e.g. first aid only)
- resulted in property damage and is not a reportable incident
- was a near miss; did not result in an injury or property damage but had the potential to (and not reportable under WorkSafeBC regulations).

Reporting near misses provides an opportunity to learn from an incident. Identifying root cause and contributing factors can reinforce good practices and procedures that are already in place or identify opportunities for improvement.

Incident/Occurrence Reporting Process:


	Reportable Incident	Non Reportable Incident
1. Report to Master and Supervisor	✓	✓
2. Report to TSB and WorkSafeBC	✓	
3. Company reports to Licensee	✓	✓
4. Marine forestry incident data provided to the Marine Forest Safety Advisory Group	✓	✓

EMERGENCY
RADIO CALL PROCEDURES

DSC RADIO

1. Make sure radio is on
2. Lift cover
3. Press DISTRESS button for 5 seconds and release

▶ HAVE ALL PEOPLE PUT ON LIFE JACKETS




EMERGENCY
RADIO CALL PROCEDURES

NON DSC RADIO

1. Change to CHANNEL 16
2. Press and hold TRANSMIT button
3. Clearly say: **"MAYDAY, MAYDAY, MAYDAY"**
4. Also give:
 - vessel name/description
 - position/location
 - nature of emergency
 - number of people on board
5. Release TRANSMIT button
6. Wait 30 seconds—if no response, repeat **"MAYDAY"** call

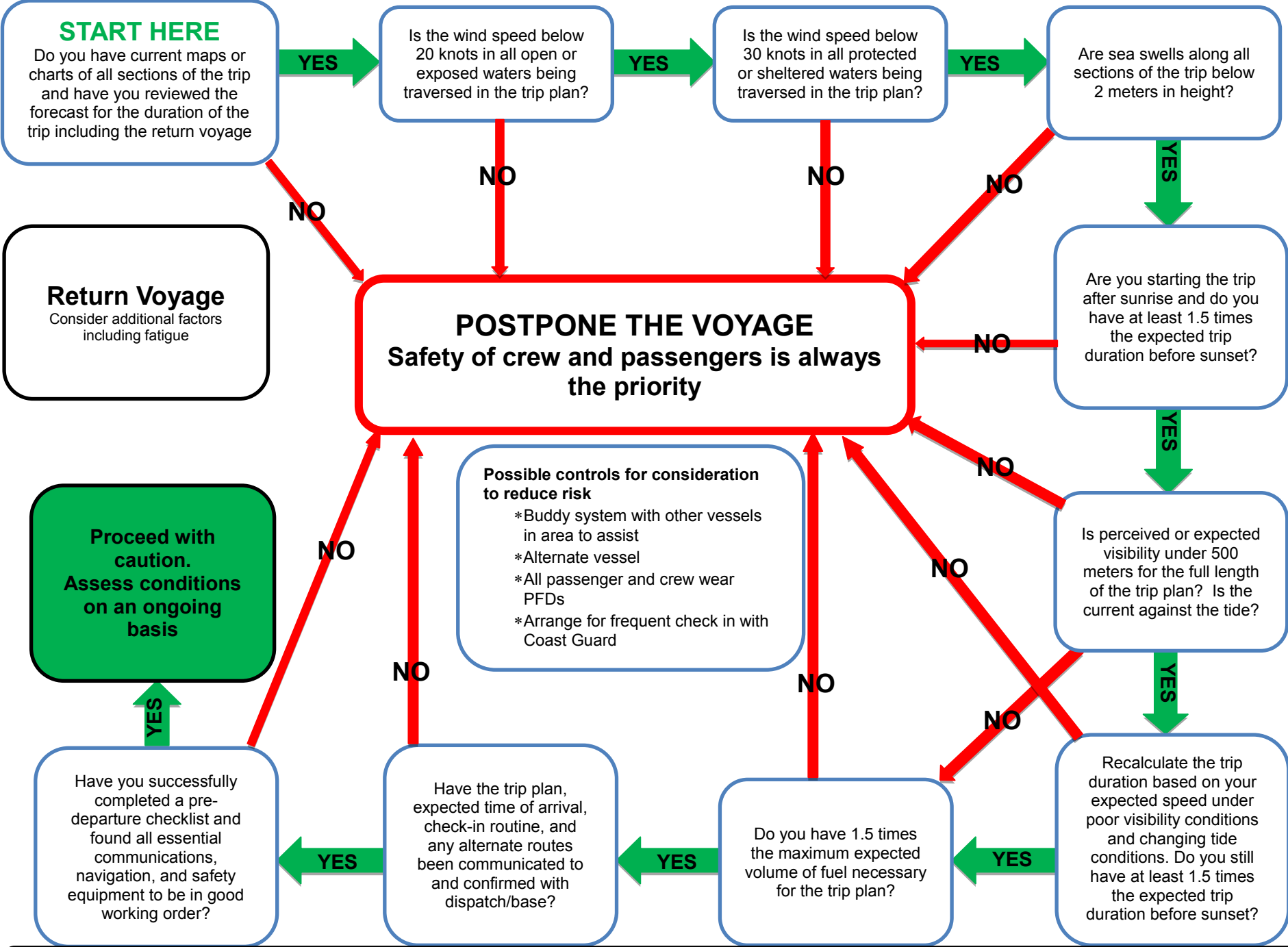
▶ HAVE ALL PEOPLE PUT ON LIFE JACKETS



Appendix 4

Go – No-Go Guidelines

Marine Go No-Go Flowchart—Small Passenger Vessels



This decision tree applies to the proposed trip plan and route. Conditions must be monitored on an ongoing basis. Should conditions change, or the route be altered, repeat the process under these new conditions.

Appendix 5

Ship Safety Bulletin – Sheltered Waters



SHIP SAFETY BULLETIN

Bulletin No.: 03/2015
RDIMS No.: 10385708
Date: 2015-04-01
Y - M - D

We issue Ship Safety Bulletins for the marine community. Visit our Website at www.tc.gc.ca/ssb-bsn to view existing bulletins and to sign up to receive e-mail notices of new ones.



Subject: **SHELTERED WATERS VOYAGES (amendment 2015-05-29)**

This Bulletin has been replaced by Bulletin No. [08/2017](#)

Scope

This SHIP SAFETY BULLETIN informs vessel owners and operators that Transport Canada now recognizes certain near coastal voyage, class 2 voyages, as sheltered waters voyages.

Background

A sheltered waters voyage is one on waters we have found to be low risk. Vessels that operate only on sheltered waters voyages may be subject to reduced safety requirements due to this low risk environment.

Transport Canada is updating the *Vessel Certificates Regulations* to propose a broader definition of a sheltered waters voyage and to expand the sheltered waters voyages schedules.

These proposed changes mean that some waters currently classified as near coastal voyage, Class 2 voyages would be classified as sheltered waters voyages.

Since we don't expect the proposed Regulations to be published for the start of the 2015 navigation season, Transport Canada Marine Safety and Security has published the policy on Recognizing Certain Near Coastal Voyage, Class 2 Voyages as Sheltered Waters Voyages. This allows industry to benefit from the proposed changes right away.

The policy:

- Recognizes voyages that fit into the definition below as sheltered waters voyages:

Keywords:

1. Sheltered waters voyage
2. Near coastal voyage, class 2
3. Vessel Certificates Regulations

Questions concerning this Bulletin should be addressed to:

AMSD
1-855-859-3123

Transport Canada
Marine Safety and Security
Tower C, Place de Ville
330 Sparks Street, 11th Floor
Ottawa, Ontario K1A 0N8

Contact us at: marinesafety-securitemaritime@tc.gc.ca or 1-855-859-3123 (Toll Free).



A voyage in Canada, on a lake or a river above tidal waters, where a vessel can **never** be further than 2.5 nautical miles from shore (measured either from the mainland or from an island the vessel can use as a safe refuge from the weather); and

- Adds waters in the Additional Information section below, to the waters already listed in Schedule 1 of the *Vessel Certificates Regulations*.

Additional Information

SHELTERED WATERS VOYAGES — WATERS

ONTARIO

Column 1 Waters	Column 2 Period
The waters of Georgian Bay east of a line drawn in a northerly direction from the mainland at 44°51.5'N, 80°0.5'W to the southern tip of Giants Tomb Island and south of a line drawn from the northern tip of Giants Tomb Island to the mainland at Cognashene Point, including the waters of Severn Sound and Penetanguishene and Midland Harbours	Beginning on May 1 and ending on October 31
The waters of Lake Huron south of the US navigation light #7 (Lake Huron Cut) west of longitude 82°24'W and north of the Fort Gratiot navigation light	Beginning on May 15 and ending on October 15.
The waters of the St. Clair River and the Detroit River south of the Ft. Gratiot Light and north of latitude 42°3'N at Bar Point, but not including Lake St. Clair	Beginning on January 1 and ending on December 31
The waters of Lake Ontario, including Toronto Inner Harbour and Toronto Outer Harbour, north of a line drawn between the following coordinates: 43°36.99'N, 79°28.59'W thence to 43°35.95'N, 79°23.13'W and thence to 43°36.78'N, 79°20.65'W.	Beginning on May 1 st and ending on September 30 th .
The waters of Presqu'ile Bay near Brighton, west of a line drawn due north from Presqu'ile Point	Beginning on January 1 and ending on December 31
The Bay of Quinte, North Channel and all connecting waters, bounded in the east by a line	Beginning on January 1 and ending on December 31

<p>drawn from Pleasant Point on the Cressy Point Peninsula to Pig Point on Amherst Island, then along the shoreline to the eastern extremity of Amherst Island, (44°10.8'N, 76°37.1'W) then to Salmon Island, and then to Carruthers Point on the mainland shore near Kingston</p>	
<p>The waters of Lake Ontario in the vicinity of Wolfe Island that are a) east of a line drawn from Nine Mile Point on Simcoe Island to Long Point on Wolfe Island, then to Bear Point on Wolfe Island, and b) west of a line drawn from Staley Point in Boat Channel true northwest to a point on the Simcoe Island shore</p>	<p>Beginning on May 1 and ending on October 31</p>
<p>The waters of the St. Lawrence River, other than the portions of Lake St. Francois that are in the province of Quebec; a) northeast of a line drawn from Carruthers Point, on the mainland shore near Kingston, to Salmon Island then to Snake Island and then to Nine Mile Point on Simcoe Island, b) northeast of a line drawn from Staley Point in Boat Channel true northwest to a point on the Simcoe Island shore, and c) north of a line drawn from the southernmost extremity of Wolfe Island at Bear Point to Tibbetts Point on the United States mainland.</p>	<p>Beginning on January 1 and ending on December 31</p>

QUEBEC

Column 1 Waters	Column 2 Period
<p>The waters of the Saguenay River west of a line running between Pointe Noire (48°7.433'N, 69°42.979'W) and Pointe Rouge (48°8.098'N, 69°42.08'W)</p>	<p>Beginning on January 1 and ending on December 31</p>
<p>The waters of the Mingan Archipelago bounded on the west by longitude 64°14'W, on the east by longitude 63°27'W and on the south by latitude 50°10'N</p>	<p>Beginning on May 1 and ending on September 30</p>
<p>The waters of Sept Îles Bay as far as a line drawn between the following coordinates: 50°8.5'N,</p>	<p>Beginning on January 1 and ending on December 31</p>

66°31.5'W to 50°4.5'N, 66°23.5'W thence to 50°8'N, 66°15'W and thence to 50°12.8'N, 66°13.5'W	
The waters of Plaisance Bay (Magdalen Islands) bounded in the east by a line drawn from Cap Moine-Qui-Prie (47°23.434'N, 61°46.395'W) to northern extremity of Black Head on L'Île-d'Entrée (47°17.295'N, 61°41.396'W) and thence along the west shore of L'Île-d'Entrée to the wharf at 47°16.643'N, 61°43.1'W and thence to the northeastern tip of Dune Sandy Hook (47°16.135'N, 61°46.779'W)	Beginning on May 1 and ending on September 30

NOVA SCOTIA

Column 1 Waters	Column 2 Period
The waters of the LaHave River north of a line drawn from the light at 44°16.03'N, 64°19.83'W to a point at 44°15.8'N, 64°22.1'W	Beginning May 1 st and ending August 31 st
The waters inside a line joining the Eastern extremity of Country Harbour Head (45°7.42'N, 61°38.73'W) to a point at Harbour Island (45°8.2'N, 61°37'W) and a line drawn from 45°8.3'N, 61°36.16'W, near Burke Point, to the light near Darby Point .	Beginning March 1 st and ending November 30 th
The waters of St-Anns Harbour inside a line joining Bar Point (46°17.80'N, 60°31.91'W) to a point at St. Anne's Beach (46°17.72'N, 60°32.52'W) and including all waters of Jersey Cove.	Beginning March 1 st and ending October 31 st

NEW BRUNSWICK

Column 1 Waters	Column 2 Period
The waters of Little Shemogue Harbour inside a line drawn between a point at 46°10.201'N, 64°04.048'W on the east side Little Shemogue Harbour and a point at 46°10.241'N, 64°05.091'W the west side of Little Shemogue Harbour	Beginning on April 1 st and ending December 31 st
The waters of Shemogue Harbour inside a line	Beginning on April 1 st and

<p>drawn between Shemogue Head 46°11'N, 64°7.2'W and Little Cape 46°10.879'N, 64°08.503'W</p>	<p>ending December 31st</p>
<p>The waters of L'Aboiteau inside a line drawn between a point at 46°13.885'N, 64°17.875'W on the east side of L'Aboiteau and a point at 46°13.889'N, 64°17.951'W on the west side of L'Aboiteau Harbour</p>	<p>Beginning on April 1st and ending December 31st</p>
<p>The waters of Kouchibouguac River inside a line drawn between a point at 46°13.35'N, 64°21.933'W on the east side of Kouchibouguac River and Robichaud Wharf (46°13.889'N, 64°23'W)</p>	<p>Beginning on April 1st and ending December 31st</p>
<p>The waters of Aboujagane River inside a line drawn between Robichaud Wharf (46°13.889'N, 64°23'W) and a point at 46°13.510'N, 64°23.552'W on the west side of Aboujagane River</p>	<p>Beginning on April 1st and ending December 31st</p>
<p>The waters of Shediac Bay inside a line drawn between Pointe-du-Chêne (46°14.5'N, 64°30.8'W) and Pointe Grande-Digue (46°17.404'N, 64°32.064'W)</p>	<p>Beginning on April 1st and ending December 31st</p>
<p>The waters of Cocagne Harbour inside a line drawn from Pointe-aux-Renards (46°22.026'N, 64°33.733'W) to a point at 46°22.466'N, 64°34.9'W on the east side of Cocagne Island and from a point at 46°23.972'N, 64°36.666'W on the north west side of Cocagne Island to Comierville Wharf (46°24.5'N, 64°36.933'N)</p>	<p>Beginning on April 1st and ending December 31st</p>
<p>The waters of Buctouche Harbour and connecting waters inside a line drawn between a point at 46°27.633'N, 64°36.716'W on the south east side of Dunne de Buctouche and Saint-Thomas-de-Kent Wharf (46°26.855'N, 64°38.215'W)</p>	<p>Beginning on April 1st and ending December 31st</p>
<p>The waters of Richibucto Harbour and connecting waters inside a line drawn between a point at 46°42.583'N, 64°47.383'W on South Richibucto Beach and a point at 46°42.933'N, 64°47.383'W</p>	<p>Beginning on April 1st and ending December 31st</p>

on North Richibucto Dune	
The waters of Baie de Saint-Louis and connecting waters inside a line drawn between a point at 46°46.999'N, 64°51.594'W on North Richibucto Dune and a point at 46°46.966'N, 64°52.382'W on South Richibucto Dune	Beginning on April 1 st and ending December 31 st
The waters of Kouchibouguac Bay and connecting waters inside a line drawn between a point at 46°50.221'N, 64°54.599'W on South Kochibouguac Dune and a point at 46° 50.633'N, 64°54.833'W on North Kouchibouguac Dune	Beginning on April 1 st and ending December 31 st
The waters of Rivière au Portage inside a line drawn between a point at 46°54.974'N, 64°53.365'W on the south side of Rivière au Portage and a point at 46°55.017'N, 64°53.326'W on the North side of Rivière au Portage	Beginning on April 1 st and ending December 31 st
The waters of Escuminac River inside a line drawn between a point at 47°03.467'N, 64°49.533'W on the south side of Escuminac River and a point at 47°03.485'N, 64°49.494'W on the north side of Escuminac River	Beginning on April 1 st and ending December 31 st

MANITOBA

Column 1 Waters	Column 2 Period
Bolton Lake (54°16'N, 95°47'W)	Beginning on May 1 and ending on September 30
Joint Lake (54°22.55'N, 95°24.766'W)	Beginning on May 1 and ending on September 30
Munroe Lake (59°11.8'N, 98°33.25'W)	Beginning on June 1 and ending on September 30

BRITISH COLUMBIA

Column 1 Waters	Column 2 Period
<p>The waters of the Strait of Georgia, Burrard Inlet and the Fraser River that are north of the latitude of the international boundary between Canada and the United States and east of longitude 123°22.666'W, but not including the waters of Boundary Bay.</p>	<p>Beginning on January 1 and ending on December 31</p>
<p>In the vicinity of Prince Rupert,</p> <p>a) the waters of Prince Rupert Harbour north of Charles Point including the waters of Tuck Inlet and Venn Passage east of a line drawn between Straith Point (54°18.483'N, 130°28.4'W) and Observation Point (54°20.13'N, 130°27.7'W)</p> <p>b) the waters of Fern Passage, Morse Basin, Wainwright Basin, Porpoise Harbour, Denise Inlet and Kloiya Bay</p> <p>c) the waters of Chatham Sound within the Prince Rupert Harbour limits that are not included above in paragraphs (a) and (b) and that are north of latitude 54°08.583'N and east of 130°26.883'W longitude as shown on the Canadian Hydrographic Services charts 3955 and 3958, editions dated March 21, 2008 and March 24, 1995, respectively</p> <p>d) the waters of Chatham Sound adjacent to the western shore of Smith Island, that are not within the Prince Rupert Harbour Limits as described in paragraph c), and that are north of latitude 54°08.583'N</p> <p>e) Inverness Passage north of Osborn Point, and</p> <p>f) Tsum Tsadai Inlet</p>	<p>Beginning on January 1 and ending on December 31</p>
<p>The waters that are</p> <p>a) in Lama Passage north of line drawn true east from Napier Point (52°7.90'N, 128°8.03'W) on Campbell Island to the Denny Island shore.</p> <p>b) in Gunboat Passage south and west of line</p>	<p>Beginning on January 1 and ending on December 31</p>

<p>joining Georgie Point (52°11.12'N, 127°53.08'W) on Denny Island and Madigan Point (52°11.38'N, 127°53.50'W) on Cunningham Island.</p> <p>c) in Troup Passage south of Troup Narrows</p> <p>d) in Seaforth Channel east of line joining Christiansen Point (52°14.21'N, 128°10.88'W) and Lay Point (52°12.78'N, 128°10.36'W), and</p> <p>e) in all connecting waters.</p>	
<p>All the waters of Kitimat Arm & Kildala Arm, north of a line drawn from Hilton Point (53°48.9'N, 128°52.266'W) through Louis Point (53°49.133'N, 128°45.633'W) on Coste Island to Steel Point (53°49.883'N, 128°42.333'W) on the mainland.</p>	<p>Beginning on January 1 and ending on December 31</p>
<p>All the waters of the Portland Canal near Stewart, British Columbia north of a line drawn from Glacier Point (55°49.133'N, 130°06.633'W) to Engineers Point on the opposite shore.</p>	<p>Beginning on January 1 and ending on December 31</p>
<p>The waters of Nootka Sound, Muchalat Inlet, Tlupana Inlet, Tahsis Inlet, Zeballos Inlet, Hecate Channel and connecting waters that are;</p> <p>a) east of a line drawn from Steamer Point (49°53.183'N, 126°47.883'W) true northwest to the opposite shore, and</p> <p>b) north of a line drawn from Yuquot Point on Nootka Island in an eastward direction to Burdwood Point on the Vancouver Island shore.</p>	<p>Beginning on January 1 and ending on December 31</p>
<p>The waters of Comox Harbour west of a line drawn from the navigation light on Goose Spit (49°39.618'N, 124°55.505'W) true south to the Vancouver Island shore.</p>	<p>Beginning on July 1 and ending on October 31</p>

PRINCE EDWARD ISLAND

Column 1 Waters	Column 2 Period
<p>The waters of South Lake inside a line drawn between 46°24.45'N, 62°03.466'W and 46°24.3'N, 62°03.766'W</p>	<p>Beginning on April 1 and ending on December 31.</p>

<p>The waters of Colville Bay and Souris River inside a line drawn between Lobster Point (46°20.6'N, 62°16.2'W) and Swanton Point (46°20.533'N, 62°14.4'W)</p>	<p>Beginning on April 1 and ending on December 31.</p>
<p>The waters of Rollo Bay inside a line drawn between Howe Point (46°18.266'N, 62°20'W) and Sheep Head (46°20.033'N, 62°17.7'W)</p>	<p>Beginning on April 1 and ending on December 31.</p>
<p>The waters of Howe Bay inside a line drawn between Durell Point (46°16.55'N, 62°21.4'W) and Howe Point (46°18.266'N, 62°20'W)</p>	<p>Beginning on April 1 and ending on December 31.</p>
<p>The waters of Spry Cove inside a line drawn between Spry Point (46°15.045'N, 62°22.53'W) and Durell Point (46°16.55'N, 62°21.4'W)</p>	<p>Beginning on April 1 and ending on December 31.</p>
<p>The waters of Boughton River inside a line drawn between Solander Point (46°14.55'N, 62°25.25'W) and Spry Point (46°15.045'N, 62°22.53'W)</p>	<p>Beginning on April 1 and ending on December 31.</p>
<p>The waters of Georgetown Harbour and connecting waters inside a line drawn from Launching Point (46°12.766'N, 62°24.466'W) to Boughton Spit (46°11.766'N, 62°25.9'W) to Panmure Head (46°08.7'N, 62°28'W)</p>	<p>Beginning on April 1 and ending on December 31.</p>
<p>The waters of Murray Harbour inside a line drawn between Sable Point (46°01.366'N, 62°29'W) and Old Store Point (46°01.3'N, 62°28.733'W) and a line drawn between 46°2.15'N, 62°29.01'W and 46°1.912'N, 62°29.256'W.</p>	<p>Beginning on April 1 and ending on December 31.</p>
<p>The waters of Belle River inside a line drawn between 45°58.45'N, 62°50.75'W and 45°58.4'N, 62°50.72'W</p>	<p>Beginning on April 1 and ending on December 31.</p>
<p>The waters of Flat River inside a line drawn between Jenyns Point (46°00.05'N, 62°53.616'W) and 46°00.894'N, 62°53.818'N</p>	<p>Beginning on April 1 and ending on December 31.</p>
<p>The waters of Pinette Harbour and connecting waters inside a line drawn between Pond Point (46°03.3'N, 62°57.333'W) and Pinette Point (46°02.55'N, 62°56.483'W)</p>	<p>Beginning on April 1 and ending on December 31.</p>

The waters of Orwell Bay inside a line drawn between Prim Point (46°03.166'N, 63°02.383'W) and Gallas Point (46°07.333'N, 62°57.733'W)	Beginning on April 1 and ending on December 31.
The waters of Pownal Bay inside a line drawn between Gallas Point (46°07.333'N, 62°57.733'W) and Pownal Point (46°10.483'N, 62°59.2'W)	Beginning on April 1 and ending on December 31.
The waters of Charlottetown Harbour inside a line drawn between Canceaux Point (46°12.488'N, 63°08.623'W) and Battery Point (46°12.438'N, 63°7.569'W)	Beginning on April 1 and ending on December 31.
The waters of West Hillsborough Bay inside a line drawn from Holland Cove Point (46°10.911'N, 63°8.22'W) to North Point, St. Peters Island (46°07.7'N, 63°10.4'W) to Rice Point (46°07.883'N, 63°13.25'W)	Beginning on April 1 and ending on December 31.
The waters of Tyron River inside a line drawn between Birch Point (46°12.116'N, 63°31.666'W) and Tryon Head (46°12.343'N, 63°32.749'W)	Beginning on April 1 and ending on December 31.
The waters of Cape Traverse inside a line drawn between Bells Point (46°13.22'N, 63°39.279'W) and 46°13.96'N, 63°39.228'W	Beginning on April 1 and ending on December 31.
The waters of Summerside Harbour and connecting waters inside a line drawn between Graham Head (46°20.35'N, 63°48.933'W) and Phelan Point (46°23.4'N, 63°50'W)	Beginning on April 1 and ending on December 31.
The waters of Miscouche Cove inside a line drawn between Phelan Point (46°23.4'N, 63°50'W) and Ives Point (46°23.56'N, 63°53.166'W)	Beginning on April 1 and ending on December 31.
The waters of Sunbury Cove inside a line drawn between Ives Point (46°23.56'N, 63°53.166'W) and Sunbury Point (46°24.02'N, 63°56.475'W)	Beginning on April 1 and ending on December 31.
The waters inside a line drawn between Maximville (46°25.816'N, 64°08.45'W) and Rocky Point (46°31.333'N, 64°06.75'W)	Beginning on April 1 and ending on December 31.
The waters of Percival Bay inside a line drawn between Rocky Point (46°31.333'N, 64°06.75'W)	Beginning on April 1 and ending on December 31.

and Grande Digue Point (46°35.097'N, 64°06.564'W)	
The waters of West Egmont Bay inside a line drawn between 46°36.95'N, 64°11.45'W and the West Point wharf breakwater (46°37.083'N, 64°22.333'W)	Beginning on April 1 and ending on December 31.
The waters of Miminegash River and connecting waters inside a line drawn between 46°52.774'N, 64°14.028'W and 46°52.753'N, 64°14.032'W	Beginning on April 1 and ending on December 31.
The waters of Skinners Pond inside a line drawn between 46°57.931'N, 64°07.507'W and 46°57.912'N, 64°07.537'W	Beginning on April 1 and ending on December 31.
The waters of Tignish inside a line drawn between the northern breakwater (46°57'N 63°59.7'W) and the southern breakwater (46°56.9'N, 63°59.7'W)	Beginning on April 1 and ending on December 31.
The waters of Little Tignish Run inside a line drawn between 46°56.163'N, 63°59.509'W and 46°56.147'N, 63°59.486'W	Beginning on April 1 and ending on December 31.
The waters of Kildare Creek inside a line drawn between Creek Point (46°51.282'N, 64°00.494'W) and 46°51.216'N, 64°00.666'W	Beginning on April 1 and ending on December 31.
The waters of Alberton Harbour, Cascumpec Bay, The Narrows, Malpeque Bay and connecting waters that are;	Beginning on April 1 and ending on December 31.
<ul style="list-style-type: none"> a) Inside a line drawn between Kildare Point (46°48.233'N, 64°02'W) and Alberton South Light (46°48.016'N, 64°02.161'W) b) Inside a line drawn between the north side of Palmer's Inlet (46°45.233'N, 64°00.533'W) and the south side of Palmer's Inlet (46°44.846'N, 64°0.304'W) c) Inside a line drawn between the north side of Conway Inlet (46°39.616'N, 63°52.75'W) and the south side of Conway Inlet (46°39.416'N, 63°52.183'W) d) Inside a line drawn between a point at 	

<p>46°34.433'N, 63°42.533'W on Billhook Island and Cape Aylesbury (46°34.074'N 63°40.056'W).</p>	
<p>The waters of New London Bay inside a line drawn between a point at 46°30.853'N, 63°29.068'W on the west side of New London Bay and a point at 46°30.636'N, 63°28.073'W on the east side of New London Bay</p>	<p>Beginning on April 1 and ending on December 31.</p>
<p>The waters of Rustico Bay inside a line drawn between a point at 46°27.433'N, 63°17.466'W on the west side of Rustico Bay and a point on the west end of Rustico Island (46°27.03'N, 63°16.977'W) and a line drawn between a point on the east end of Rustico Island (46°26.033'N, 63°14.033'W) and Brackley Point (46°25.911'N, 63°13.843'W)</p>	<p>Beginning on April 1 and ending on December 31.</p>
<p>The waters of Covehead Bay inside a line drawn between a point at 46°25.798'N, 63°08.878'W on the west side of Covehead Bay and Cape Stanhope (46°25.803'N, 63°08.791'W)</p>	<p>Beginning on April 1 and ending on December 31.</p>
<p>The waters of Tracadie Bay inside a line drawn between a point at 46°24.833'N, 63°02.616'W on Dalvay Beach and a point at 46°24.883'N, 63°02.3'W on the east side of Tracadie Bay</p>	<p>Beginning on April 1 and ending on December 31.</p>
<p>The waters of Savage Harbour inside a line drawn between a point at 46°25.972'N, 62°50.07'W on the west side of Savage Harbour and Savage Harbour Breakwater Light (46°26.02'N, 62°49.941'W)</p>	<p>Beginning on April 1 and ending on December 31.</p>
<p>The waters of Saint Peters Bay inside a line drawn between a point at 46°26.616'N, 62°44.466'W on the west side of Saint Peters Bay and a point at 46°26.71'N, 62°43.75'W on the east side of Saint Peters Bay</p>	<p>Beginning on April 1 and ending on December 31.</p>
<p>The waters of North Lake inside a line drawn between a point at 46°28.12'N, 62°04.129'W on the west side of North Lake Run and a point at 46°28.112'N, 62°04.091'W on the east side of</p>	<p>Beginning on April 1 and ending on December 31.</p>

North Lake Run	
----------------	--

SASKATCHEWAN

Column 1 Waters	Column 2 Period
Candle Lake (53°49.67'N, 105°18.802'W)	Beginning on May 1 and ending on November 30

NORTHWEST TERRITORIES

Column 1 Waters	Column 2 Period
Cli Lake (61°59'N, 123°18.083'W)	Beginning on June 1 and ending on September 30
Duncan Lake (62°51'N, 113°58.066'W)	Beginning on June 1 and ending on September 30
Kasba Lake (60°18'N, 102°7.016'W)	Beginning on June 1 and ending on August 31
Lac La Martre (63°15'N, 117°55.083'W)	Beginning on June 1 and ending on September 30
MacKay Lake (63°55.066' 4" N, 110°25.05' 3" W)	Beginning on July 1 and ending on September 30
Mosquito Lake (62°36'N, 103°22.033'W)	Beginning on July 1 and ending on September 30
Nonacho Lake (61°59'N, 109°28.05'W)	Beginning on June 1 and ending on September 30
Point Lake (65°15.016'N, 113°4.066'W)	Beginning on July 1 and ending on September 30
Stark Lake (62°28'N, 110°20.05'W)	Beginning on June 1 and ending on September 30
The waters of Christie Bay, Great Slave Lake northeast of a line drawn from Utsingi Point (62°21.116'N, 111°40.774'W) true south to a point on the north shore of Etthen Island at 62°20.049'N, 111°40.776'W, and from the southwest point of Etthen Island (62°9.709'N, 111°52.536'W) to Pekatanui Point (62°8.12'N, 111°38.633'W) and thence due east to a point on the mainland shore at 62°8.113'N, 111°36.337'W.	Beginning on June 1 and ending on September 30
The waters of Great Slave Lake and its outflow into the Mackenzie River west of longitude 116°25'W and east of the Deh Cho Bridge.	Beginning on June 1 and ending on September 30
The waters of the Mackenzie River, including Mills Lake, downstream of the Deh Cho Bridge, and upstream of a line drawn across the river, near kilometre 140 from a position on the north shore at 61°19.174'N, 118°33.083'W, to a position on the south shore, near Axe Point, at 61°18.352'N, 118°32.197'W.	Beginning on June 1 and ending on September 30

<p>The waters of Great Slave Lake in the vicinity of Taltheliei Narrows, east of a line drawn from the southwest extremity of Sachowia Point (62°22.559'N, 111°43.931'W) to Utsingi Point (62°21.115'N, 111°40.773'W) and west of Longitude 111°21.75'W.</p>	<p>Beginning on June 1 and ending on September 30</p>
<p>That portion of the North Arm of Great Slave Lake northwest of a line drawn from Whitebeach Point (62°28.159'N, 115°15.138'W) to a position on the opposite shore at 62°30.583'N, 115°10.25'W.</p>	<p>Beginning on June 1 and ending on October 31</p>
<p>The waters of Great Slave Lake south of the Yellowknife River Bridge and north of a line beginning at a point at 62°17.328'N, 114°12.242'W on the mainland at the mouth of Wool Bay, thence to the southernmost point of Ruth Island (62°17.372'N, 114°14.219'W), thence to a point at 62°15.967'N, 114°28.117'W in the West Mirage islands, thence northwest to a point on the mainland at 62°21'N, 114°35'W.</p>	<p>Beginning June 1 and ending October 31</p>

NUNAVUT

Column 1 Waters	Column 2 Period
<p>The waters of Northeast Bay, Dubawnt Lake east of a line from the south end of an unnamed point at 63°22.485'N, 101°6.517'W to the north end of an unnamed point at 63°20.054'N, 101°1.178'W.</p>	<p>Beginning on July 1 and ending on August 31</p>

SHELTERED WATERS VOYAGES MADE BY A FERRY

QUEBEC

Column 1 Points	Column 2 Period
The wharf at Saint-Joseph-de-la-Rive (47°26.926'N, 70°21.91'W) and the wharf at Île-aux-Coudres (47°25.26'N, 70°23.546'W)	Beginning on January 1 and ending on December 31
The wharf of the municipality of L'Île-Verte (48°1.5'N, 69°20.983'W) and the public wharf at La Richardière (48°2.363'N, 69°24.368'W)	Beginning on January 1 and ending on December 31

NOVA SCOTIA

Column 1 Points	Column 2 Period
The Englishtown ferry route from the wharf at 46°17.4'N, 60° 32.5'W and the wharf at 46°17.36'N, 60°32.348'W	Beginning on January 1 and ending on December 31
The Little Narrows ferry route from the wharf at 45°59.53'N, 60°59.017'W and the wharf at 45°59.572'N, 60°59.163'W	Beginning on January 1 and ending on December 31
The Country Harbour ferry route from the wharf at 45°10.15'N, 61°42.178'W and the wharf at 45°10.476'N, 61°41.83'W	Beginning on January 1 and ending on December 31
The LaHave River ferry route from the wharf at 44°17.754'N, 64°21.69'W and the wharf at 44°18.17'N, 64°21.56'W	Beginning on January 1 and ending on December 31

Contact information

Please address your questions or concerns to:
 Manager National Marine Safety Program – Flag State, Compliance & Enforcement
 AMSD
 330 Sparks St., Ottawa, ON, K1A 0N8
 Phone: 613-991-3142
 Email: insp.stand-norm.insp@tc.gc.ca